

**AGRICULTURE, FORESTRY & TURF**  
**— PRODUCT CATALOGUE —**



# TEST RESULTS

## Gross Contact Area Index

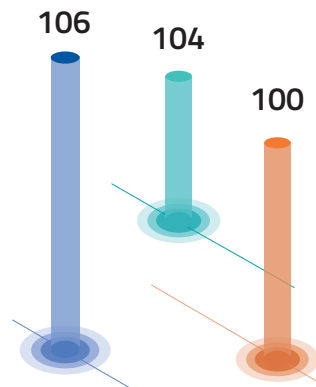
Higher is better

- CEAT
- Competitor 1
- Competitor 2

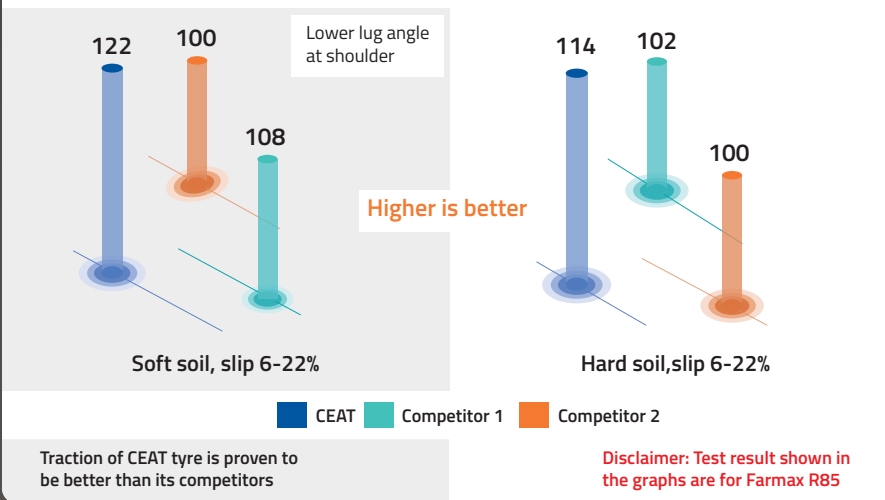
Contact Area in Index (Length\*width)

CEAT tyre showed higher gross contact area than its competitors which indicates lower soil compaction

Disclaimer: Test result shown in the graphs are for Farmax R85



## Pulling force index soft and hard soil



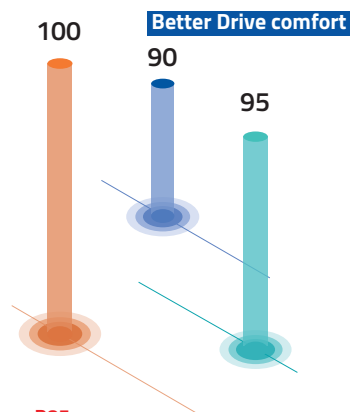
Vibration level of CEAT is 5-10% lower than its competitors. Subjective handling evaluation supports the measurement

Lower is better

- CEAT
- Competitor 1
- Competitor 2

Vibration level crest factor index

Disclaimer: Test result shown in the graphs are for Farmax R85



# INDEX

TORQUEMAX	4-5	FARMAX R1	48-49
FARMAX HPT	6-7	FARMAX R2 (BIAS)	50-51
FARMAX R65	8-9	FARMAX AS	52-53
FARMAX R70	10-11	FARMAX F2	54-55
FARMAX R75	12-13	FARMAX X3 TF	56-57
FARMAX R80	14-15	FARMAX F2M	58-59
FARMAX R85	16-17	FARMAX R1 HD	60-61
FARMAX R90	18-19	YIELDMAX 23°	62-63
FARMAX R2 (RADIAL)	20-21	FARM IMPLEMENT AWI 305	64-65
MULTILOADMAX	22-23	FARM IMPLEMENT 404	66-67
YIELDMAX	24-25	FARM IMPLEMENT LP	68-69
SPRAYMAX	26-27	FLOTATION PLUS	70-71
FARMAX RC	28-29	FLOTATION T422	72-73
FLOATMAX VF X3	30-31	T422 VALUE PRO	74-75
FLOATMAX CARGO PLUS	32-33	FLOTATION TX440	76-77
FLOATMAX FT	34-35	TR 800	78-79
FLOATMAX RT	36-37	IRROGATOR	80-81
FARM IMPLEMENT 800R	38-39	TURF-XL	82-83
HI-FLEX IMPLEMENT	40-41	LOGGER XL	84-85
LIFTPRO	42-43	FOREST XL	86-87
LOADPRO	44-45	LOAD INDEX & SPEED SYMBOL	88
LOADPRO HARD SURFACE	46-47	WARRANTY POLICY	89



# TORQUEMAX

for High Power Tractors,  
Grain Carts & Air Seeders



**Stepped lug design**

Better grip



**Tilted lug tip**

Lower vibration  
at high speed



**Wider tread width**

Lower  
compaction



**Stronger & wider lugs**

Longer life



**Lower lug angle at the shoulder**

Better traction



**Rounded shoulder**

Less soil  
damage



# TORQUEMAX

## SIZES

---

VF600/60 R 28 157D TL SB

---

VF600/65 R 28 163D TL SB

---

IF600/70 R 30 165D TL

---

VF540/65 R 30 NRO 163D TL SB

---

VF600/70 R 30 170D TL

---

VF600/70 R 30 170D TL SB

---

VF600/60 R 30 NRO 162D TL

---

IF600/70 R 34 160D TL

---

IF600/70 R 34 167D TL

---

IF650/60 R 34 159D TL

---

VF650/60 R 34 168D TL

---

VF650/60 R 34 168D TL SB

---

VF650/65 R 34 NRO 167D TL SB

---

VF650/65 R 34 NRO 170D TL SB

---

VF580/80 R 34 178D TL

---

IF800/70 R 38 190D TL SB

---

IF520/85 R 38 167D TL

---

IF710/70 R 38 178D TL

---

IF710/70 R 38 181A8/178B FB TL

---

VF650/65 R 38 175D TL SB

---

VF520/85 R 38 170D TL

---

VF520/85 R 38 170D TL SB

---

VF710/60 R 38 NRO 171D TL SB

---

VF710/70 R 38 178D TL

---

VF800/70 R 38 187D TL SB

---



---

VF900/60 R 38 193D TL SB

---

VF650/85 R 38 182D TL

---

IF800/70 R 38 CFO 190D TL SB

---

IF710/70 R 42 179D TL

---

IF710/75 R 42 176D TL

---

IF710/75 R 42 176D TL SB

---

IF850/75 R 42 186D TL SB

---

VF520/85 R 42 174D/177A8 TL

---

VF520/85 R 42 174D/177A8 TL SB

---

VF650/65 R 42 174D TL

---

VF650/65 R 42 174D TL SB

---

VF710/70 R 42 185D TL

---

VF710/70 R 42 185D TL SB

---

VF710/75 R 42 184D TL

---

VF710/75 R 42 184D TL SB

---

VF710/60 R 42 NRO 176D TL

---

VF750/75 R 46 189D TL SB

---

\*SB = Steel belted

# FARMAX HPT for High Power Tractors



### Stepped lug tip

Increase the grip and reducing the tractor slip



### Lug base tie bar

Additional support to lugs and also helps to remove mud from lugs



### Extra wide tread

Higher footprint which gives better stability



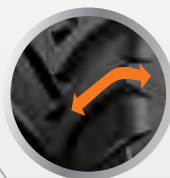
### 50° lug angle at centre

Smoother road driving comfort, less noise and vibration



### Rounded shoulder

Provides less soil damage & better grip



### Higher NSD

Provides better grip and high traction





# FARMAX HPT

## SIZES

---

600/70 R 28 157D/160A8 TL

---

600/70 R 30 158D/161A8 TL

---

600/70 R 30 168D/171A8 TL

---

600/70 R 34 160D TL

---

650/65 R 34 161D TL

---

650/75 R 38 169D TL

---

650/85 R 38 170D/173A8 TL

---

650/85 R 38 173D/176A8 TL

---

710/70 R 38 171D TL

---

710/70 R 38 178D/181A8 TL

---

800/70 R 38 178D TL

---

710/70 R 42 173D TL

---

710/70 R 42 176D/179A8 TL

---

710/75 R 42 175D TL

---

710/75 R 42 181D TL

---

480/80 R 50 159D/162A8 TL

---

480/80 R 50 165D/168A8 TL

---

480/80 R 50 179D TL

---



# FARMAX R65 for Low To Mid HP Tractors



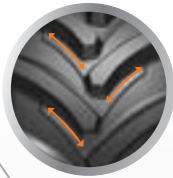
**Tilted lug tip**

Lesser vibration and noise



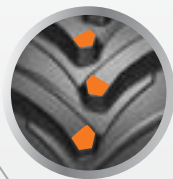
**Mud breaker**

Better self-cleaning



**Higher angle and lug overlap at center**

Better roadability



**R1 W tread depth**

Longer tyre life



**Lower angle at shoulder**

Superior traction



**Rounded Shoulder**

Reduced damage to soil and crops



**Wider tread, larger inner volume**

Reduced soil compaction





# FARMAX R65

## SIZES

---

320/65 R 16 117D TL

---

320/65 R 18 109D TL

---

340/65 R 18 122D TL

---

340/65 R 20 124D TL

---

420/65 R 20 135D TL

---

440/65 R 20 138D TL

---

420/65 R 24 138D TL

---

440/65 R 24 128D TL

---

440/65 R 24 135D/138A8 TL

---

480/65 R 24 133D TL

---

480/65 R 24 140D/143A8 TL

---

540/65 R 24 140D TL

---

540/65 R 24 146D TL

---

440/65 R 28 138D TL

---

480/65 R 28 136D TL

---

480/65 R 28 142D/145A8 TL

---

540/65 R 28 142D TL

---

540/65 R 28 149D TL

---

600/65 R 28 147D/150A8 TL

---

600/65 R 28 154D TL

---

540/65 R 30 143D TL

---

540/65 R 30 150D TL

---

600/65 R 30 149D TL

---

600/65 R 30 155D TL

---



---

540/65 R 34 145D TL

---

540/65 R 34 152D TL

---

600/65 R 34 151D TL

---

600/65 R 34 157D TL

---

540/65 R 38 147D TL

---

540/65 R 38 153D TL

---

600/65 R 38 153D TL

---

650/65 R 38 157D TL

---

650/65 R 38 163D TL

---

650/65 R 42 158D TL

---

650/65 R 42 165D TL

---

650/65 R 42 170D TL

---

# FARMAX R70 for Low To Mid HP Tractors



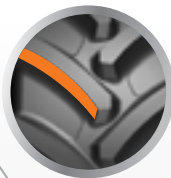
Higher angle  
and lug overlap  
at center

Better roadability



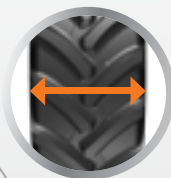
R1 W  
tread depth

Longer tyre life



Wider tread,  
larger inner  
volume

Reduced soil  
compaction



Rounded  
shoulder

Reduced damage  
to soil and crops



Lower angle  
at shoulder

Superior traction



# FARMAX R70

## SIZES



200/70 R 16 94D/97A8 TL

240/70 R 16 104D/107A8 TL

260/70 R 16 109D/112A8 TL

280/70 R 16 112D/115A8 TL

280/70 R 18 114D/117A8 TL

260/70 R 20 113D/115A8 TL

280/70 R 20 116D/119A8 TL

300/70 R 20 110D/113A8 TL

300/70 R 20 120D/123A8 TL

320/70 R 20 113D/116A8 TL

320/70 R 20 123D/126A8 TL

360/70 R 20 129D/132A8 TL

360/70 R 20 120D/123A8 TL

380/70 R 20 122D/125A8 TL

380/70 R 20 132D/135A8 TL

320/70 R 24 116D/119A8 TL

360/70 R 24 122D/125A8 TL

380/70 R 24 125A8/B TL

380/70 R 24 125D TL

420/70 R 24 130A8/B TL

420/70 R 24 130D TL

480/70 R 24 138D/141A8 TL

320/70 R 28 119D/122A8 TL

360/70 R 28 125D/128A8 TL

380/70 R 28 127D/130A8 TL

420/70 R 28 133A8/B TL

420/70 R 28 133D TL

480/70 R 28 140D/143A8 TL

480/70 R 28 151D/154A8 TL

600/70 R 28 161D/164A8 TL

420/70 R 30 134D/137A8 TL

480/70 R 30 141D/144A8 TL

480/70 R 30 147D/150A8 TL

520/70 R 30 145D/148A8 TL

600/70 R 30 152D/155A8 TL

600/70 R 30 158D TL

480/70 R 34 143D/146A8 TL

480/70 R 34 149A8/B TL

480/70 R 34 155D/158A8 TL

520/70 R 34 148D/151A8 TL

520/70 R 34 168D/171A8 TL

480/70 R 38 145D/148A8 TL

520/70 R 38 150A8/B TL

520/70 R 38 150D TL

580/70 R 38 155D/158A8 TL

580/70 R 38 170D/173A8 TL

580/70 R 38 180D/183A8 TL

710/70 R 38 172D/175A8 TL

710/70 R 38 178A8/B TL

710/70 R 38 178D TL

580/70 R 42 158A8/B TL

580/70 R 42 158D/161A8 TL

620/70 R 42 166D/169A8 TL

620/70 R 42 173D/176A8 TL

710/70 R 42 173A8/B TL

710/70 R 42 173D TL



# FARMAX R75 for Low To Mid HP Tractors



Higher angle  
and lug overlap  
at center

Better roadability



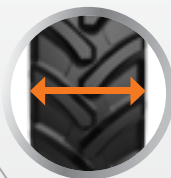
R1 W  
tread depth

Longer tyre life



Wider tread,  
larger inner  
volume

Reduced soil  
compaction



Rounded  
shoulder

Reduced damage  
to soil and crops



Lower angle  
at shoulder

Superior traction



# FARMAX R75

## SIZES

---

400/75 R 38 138D/141A8 TL

---





# FARMAX R80

## for Low To Mid HP Tractors



Higher angle  
and lug overlap  
at center

Better roadability



R1 W  
tread depth

Longer tyre life



Wider tread,  
larger inner  
volume

Reduced soil  
compaction



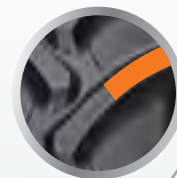
Rounded  
shoulder

Reduced damage  
to soil and crops



Lower angle  
at shoulder

Superior traction





# FARMAX R80

## SIZES

---

480/80 R 26 143A8/B TL

---

380/80 R 38 142A8/B TL

---

380/80 R 38 152A8/B TL

---

380/80 R 38 154D/157A8 TL

---

480/80 R 42 151A8/B TL

---

480/80 R 42 153A8/B TL

---

480/80 R 42 169A8/B TL

---

420/80 R 46 151D/154A8 TL

---

420/80 R 46 159D/162A8 TL

---

480/80 R 46 158A8/B TL

---

480/80 R 46 164A8/B TL

---



# FARMAX R85 for Low To Mid HP Tractors

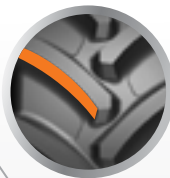


Higher angle  
and lug overlap  
at center



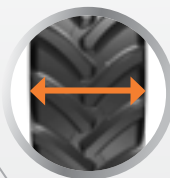
Better roadability

R1 W  
tread depth



Longer tyre life

Wider tread,  
larger inner  
volume



Reduced soil  
compaction

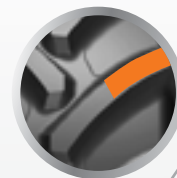


Rounded  
shoulder



Reduced damage  
to soil and crops

Lower angle  
at shoulder



Superior traction

# FARMAX R85

## SIZES

---

250/85 R 20 116D/119A8 TL

---

280/85 R 20 112D/115A8 TL

---

320/85 R 20 119D/122A8 TL

---

250/85 R 24 109D/112A8 TL

---

280/85 R 24 115D/118A8 TL

---

320/85 R 24 122D/125A8 TL

---

320/85 R 24 142D/145A8 TL

---

340/85 R 24 125A8/B TL

---

340/85 R 24 125D TL

---

380/85 R 24 131A8/B TL

---

380/85 R 24 131D TL

---

420/85 R 24 137D/140A8 TL

---

250/85 R 28 112D/115A8 TL

---

280/85 R 28 118D/121A8 TL

---

320/85 R 28 124D/127A8 TL

---

340/85 R 28 127D/130A8 TL

---

380/85 R 28 133A8/B TL

---

380/85 R 28 133D TL

---

420/85 R 28 139D/142A8 TL

---

380/85 R 30 135D/138A8 TL

---

420/85 R 30 140A8/B TL

---

420/85 R 30 140D TL

---

420/85 R 30 147D/150A8 TL

---

460/85 R 30 145D/148A8 TL

---

320/85 R 32 126D/129A8 TL

---

320/85 R 32 142D/145A8 TL

---

320/85 R 32 145D/148A8 TL

---

320/85 R 34 141D/144A8 TL

---

380/85 R 34 137D/140A8 TL

---

420/85 R 34 142A8/B TL

---

420/85 R 34 142D TL

---

420/85 R 34 147D/150A8 TL

---

460/85 R 34 147D/150A8 TL

---

460/85 R 34 157D/160A8 TL

---

320/85 R 36 128D/131A8 TL

---

340/85 R 36 132D/135A8 TL

---

320/85 R 38 143D/146A8 TL

---

340/85 R 38 133D/136A8 TL

---

340/85 R 38 148D/151A8 TL

---

340/85 R 38 151D/154A8 TL

---

420/85 R 38 144D/147A8 TL

---

460/85 R 38 TL 149D/152A8

---

460/85 R 38 153D/156A8 TL

---

460/85 R 38 167D/170A8 TL

---

520/85 R 38 155D/158A8 TL

---

520/85 R 38 169D/172A8 TL

---

520/85 R 42 157D/160A8 TL

---

520/85 R 42 169A8/B TL

---

520/85 R 42 169D/172A8 TL

---

520/85 R 46 158D/161A8 TL

---

520/85 R 46 174D/177A8 TL

---





# FARMAX R90

## for Low To Mid HP Tractors



Higher angle  
and lug overlap  
at center

Better roadability



R1 W  
tread depth

Longer tyre life



Wider tread,  
larger inner  
volume

Reduced soil  
compaction



Rounded  
shoulder

Reduced damage  
to soil and crops



Lower angle  
at shoulder

Superior traction



# FARMAX R90

## SIZES

---

420/90 R 30 142A8/B TL

---

420/90 R 30 147A8/B TL

---



# FARMAX R2 (RADIAL)

for Tractors used in Rice & Sugarcane Farming



Extra-deep tread with curved tread bars



Better self cleaning & traction in wet soil

Tie bar at the center



Strengthened lug base for better stability



Stepped lug design

Added grip in wet & moist soil



Buttressed bar base

Better self cleaning



Bolstered nose at tread center

Improved wear and performance



# FARMAX R2 (RADIAL)

## SIZES

---

420/90R30 142A8/B

---

520/85R42 157A8/B

---



# MULTILOADMAX for Multipurpose Application



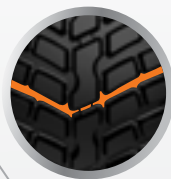
## Big centre block

Gives better stability on road



## Unique angular grooves

Better driving comfort & self cleaning



## Steel belted carcass

Uniform load distribution and good puncture & impact resistance



## Robust block design

Good traction on-road & off-road



# MULTILOADMAX

## SIZES

---

600/70 R 30 166D TL SB

---

\*SB = Steel belted





# YIELDMAX for Combine Harvesters



## R1 W pattern

Longer tyre life



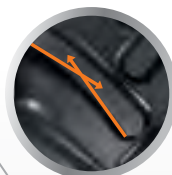
## Strong and sharp shoulders

Better grip



## Dual lug angle

Higher traction and better stability



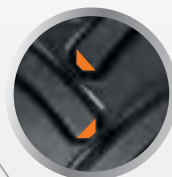
## Wide open shoulders

Better self-cleaning



## Higher lug overlap

Enhanced roadability and load ability



## Rounded lug base

Stubble resistance



# YIELDMAX

## SIZES

---

620/75 R 26 CHO 166A8/B TL

---

620/75 R 26 CHO 166 A8/B TL SB

---

750/65 R 26(28L R 26) 173A8/170B TL

---

620/75 R 30 CHO 169A8/B TL SB

---

650/75 R 32 CHO 172A8/B TL

---

650/75 R 32 CHO 172A8/B TL SB

---

800/65 R 32 CHO 181A8/B TL

---

800/65 R 32 CHO 181A8/B TL SB

---

900/60 R 32 193A8/B TL SB

---

620/75 R 34 CHO 170A8/B TL SB

---

\*SB = Steel belted





# SPRAYMAX for Sprayers



**Higher NSD**

Longer life



**Advanced VF technology**

40% more load carrying capability than standard radial

**Stepped lug design**

Better grip & traction

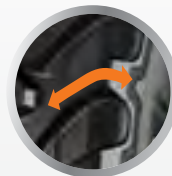


**Advanced lug geometry**

Better roadability

**Rounded shoulder**

Provides less soil and crop damage





# SPRAYMAX

## SIZES

---

VF380/80 R 38 167D TL

---

VF480/80 R 42 162D TL

---

VF480/80 R 42 162D TL SB

---

VF480/80 R 42 176D TL

---

VF480/80 R 42 176D TL SB

---

VF380/90 R 46 173D TL

---

VF380/90 R 46 173D TL SB

---

VF480/80 R 46 164D TL

---

VF480/80 R 46 164D TL SB

---

VF480/80 R 46 177D TL

---

VF480/80 R 46 177D TL SB

---

VF750/60 R 46 189D TL

---

VF380/105 R 50 179D TL SB

---

VF380/90 R 50 175D TL

---

VF380/90 R 50 175D TL SB

---

VF480/80 R 50 179D TL

---

VF480/80 R 50 179D TL SB

---

VF420/95 R 50 177D TL SB

---

VF380/90 R 54 176D TL

---

VF480/95 R 54 180D TL SB

---

VF380/90 R 54 176D TL SB

---

VF380/105 R 54 168D

---



\*SB = Steel belted

# FARMAX RC for Row Crop



Higher angle  
and lug overlap  
at center

Better roadability  
and stability



Rounded  
shoulder

Reduced damage  
to soil and crops



Higher number  
of lugs

Superior traction

Strong carcass  
and bead

Higher load  
carrying capacity

D-rated  
(40mph) tyres

Improved  
transportation  
speed

# FARMAX RC

## SIZES

---

210/95 R 32 117D/120A8 TL

---

230/95 R 32 128D/131A8 TL

---

270/95 R 32 133D/136A8 TL

---

210/95 R 36 118D/121A8 TL

---

230/95 R 36 127D/130A8 TL

---

230/95 R 36 130D/133A8 TL

---

270/95 R 36 136D/139A8/B TL

---

270/95 R 38 137D/140 A8 TL

---

270/95 R 38 140D/143A8 TL

---

230/95 R 40 132D/135A8 TL

---

230/95 R 42 133D/136A8 TL

---

270/95 R 42 137D/140A8 TL

---

270/95 R 42 139D/142A8 TL

---

320/80 R 42 141A8/B TL

---

320/90 R 42 136D/139A8 TL

---

320/90 R 42 144D/147A8 TL

---

210/95 R 44 120D/123A8 TL

---

230/95 R 44 129D/132A8 TL

---

230/95 R 44 134D/137A8 TL

---

270/95 R 44 142D/145A8 TL

---

270/95 R 44 140D/143A8 TL

---

270/95 R 46 141D/144 A8 TL

---

300/95 R 46 143D/146A8 TL

---

300/95 R 46 148D/151A8 TL

---



320/90 R 46 146D/149A8 TL

---

340/85 R 46 147D/150A8 TL

---

340/85 R 46 150D/153A8 TL

---

380/90 R 46 159D/162A8 TL

---

380/90 R 46 162D/165A8 TL

---

380/90 R 46 165A8/B TL

---

230/95 R 48 136D/139A8 TL

---

270/95 R 48 142D/145A8 TL

---

340/85 R 48 148D/151A8 TL

---

340/85 R 48 156D/159A8 TL

---

320/90 R 50 150D/153A8 TL

---

380/105 R 50 168D/171A8 TL

---

380/90 R 50 151D/154A8 TL

---

380/90 R 50 158D/161A8 TL

---

300/95 R 52 149D/152A8 TL

---

270/95 R 54 146D/149A8 TL

---

320/90 R 54 153D/156A8 TL

---



# FLOATMAX VF X3 for Tankers, Trailers & Agri-trucks



## Distinctive tread pattern

Superior handling and self-cleaning



## Robust center block

Improved stability



## Steel-belted carcass

Enhanced impact protection

## VF Casing

Reduced soil compaction



# FLOATMAX VF X3

## SIZES

---

VF560/60 R 22.5 166D TL SB

---

\*SB = Steel belted



# FLOATMAX CARGO PLUS for Spreaders, Tankers & Trailers



**Non-directional  
and robust lugs**

High traction



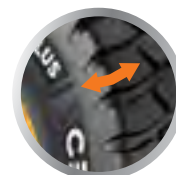
**Robust  
center blocks**

Reduced noise &  
improved comfort  
on hard surfaces



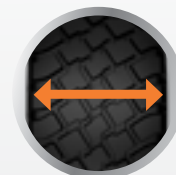
**Steel-Belted build**

Puncture & stubble  
protection, uniform  
pressure distribution



**Rounded shoulder**

Reduced  
crop damage



**Flat crown width**

Larger footprint  
for improved  
floatation



# FLOATMAX CARGO PLUS

## SIZES

---

28LR26 (750/65R26) 176D TL SB

---

VF900/65 R 32 197D TL SB

---

\*SB = Steel belted



# FLOATMAX FT for Trailers



**Directional lug**

Better traction



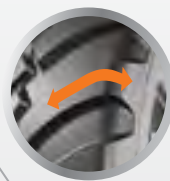
**Robust lug**

Self cleaning,  
better grip



**Rounded  
shoulder**

Reduced soil  
disturbance



**Higher V/R ratio**

Longer life

**Robust  
center blocks**

Low vibration and  
smoother ride on  
hard surfaces

**Flat tread  
profile**

Larger footprint  
increases  
floatation



# FLOATMAX FT

## SIZES

---

500/60 R 22.5 155D TL

---

500/60 R 22.5 155D TL SB

---

560/45 R 22.5 152D TL

---

560/45 R 22.5 152D TL SB

---

560/60 R 22.5 161D TL

---

560/60 R 22.5 164D TL SB

---

580/65 R 22.5 166D TL SB

---

600/50 R 22.5 159D TL

---

600/50 R 22.5 159D TL SB

---

710/45 R 22.5 165D TL SB

---

600/55 R 26.5 165D TL

---

600/55 R 26.5 165D TL SB

---

650/55 R 26.5 178D TL SB

---

650/60 R 26.5 173D TL SB

---

650/65 R 26.5 174D TL SB

---

710/50 R 26.5 170D TL SB

---

750/45 R 26.5 170D TL SB

---

800/45 R 26.5 174D TL SB

---

650/65 R 30.5 176D TL SB

---

750/60 R 30.5 181D TL SB

---

850/50 R 30.5 182D TL SB

---

710/50 R 30.5 176D TL SB

---

800/60 R 32 185D TL SB

---

\*SB = Steel belted





# FLOATMAX RT for Spreaders, Tankers & Trailers



## Directional lug

Higher traction,  
comfortable ride



## Rounded shoulder

Less damage to  
soil and crops



## Robust centre blocks

Low noise and  
smooth run on  
hard surface



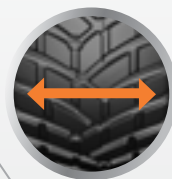
## Interconnected grooves

Better  
self-cleaning  
properties



## Flatter crown width

Larger footprint,  
lower compaction



## Steel belted

Puncture and  
stubble damage  
protection



# FLOATMAX RT

## SIZES

---

385/65 R 22.5 164D TL SB

---

500/60 R 22.5 155D TL SB

---

560/45 R 22.5 152D TL SB

---

560/60 R 22.5 165D TL SB

---

580/65 R 22.5 166D TL SB

---

650/50 R 22.5 163D TL SB

---

600/55 R 26.5 165D TL SB

---

650/55 R 26.5 178D TL SB

---

710/50 R 26.5 172D TL SB

---

\*SB = Steel belted



# FARM IMPLEMENT 800R for Implements



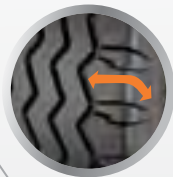
## Rib pattern

Wider footprint &  
lower ground  
pressure



## Lugs with rounded shoulders

Excellent  
self-cleaning  
capabilities



## Special shoulder design

Strong grip



## Steel belted construction

Protection from  
punctures



# FARM IMPLEMENT 800R

## SIZES

---

380/55 R 16.5 150A8/B TL SB

---

440/55 R 18 159A8/B TL SB

---

\*SB = Steel belted



# HI-FLEX IMPLEMENT for Bailers, Seeders & Grain Carts

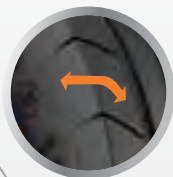


### IF Construction

Carry heavier load  
at low inflation  
pressure

### Rounded Shoulder

Less damage to  
soil and crops



### Steel belt at crown

Puncture  
resistance

### Reinforced sidewall & bead

Longer tyre life

# HI-FLEX IMPLEMENT

## SIZES

---

IF280/70 R 15 137D TL SB

---

IF320/70 R 15 146D TL SB

---

\*SB = Steel belted





# LIFT PRO for Telehandlers & Boom Lifters



**Unique R1 pattern**

Excellent traction



**Deep under tread**

Improved puncture resistance



**Strong nylon casing & thick sidewall**

High radial & lateral stability



# LIFT PRO

## SIZES

---

460/70 R 24 159A8/B TL

---

15.5/80-24 16PR TL\*\*

---

\*\*5 Years Warranty on Bias LIFTPRO Tyres



# LOADPRO for Telehandlers



**Greater lug overlap and more lugs in footprint**

Uniform load distribution



**Steel belted radial construction**

Protection from punctures



**Extra reinforced sidewalls**

Additional lateral stability

**Strong bead**

Better carcass strength and load carrying capacity



# LOADPRO

## SIZES

---

280/80 R 18 132A8/B TL SB

---

300/75 R 18 142A8/B TL SB

---

340/80 R 18 143A8/B TL SB

---

280/80 R 20 133A8/B TL SB

---

380/75 R 20 148A8/B TL SB

---

400/70 R 20(16.0/70R20) 149A8/B TL SB

---

405/75 R 24 152A8/B TL SB

---

440/80 R 24 161A8/B TL SB

---

460/70 R 24(17.5LR24) 159A8/B TL SB

---

500/70 R 24(19.5LR24) 164A8/B TL SB

---

480/80 R 26(18.4R26) 160A8/B TL SB

---

480/80 R 26(18.4R26) 167A8/B TL SB

---

440/80 R 28(16.9R28) 156A8/B TL SB

---

500/70 R 28 164A8/B TL SB

---

400/80-24 162A8 TL\*\*

---

440/80-24 168A8 TL\*\*

---

440/80-28(16.9-28) 156A8 TL\*\*

---



\*SB = Steel belted

\*\*5 Years Warranty on Bias LOADPRO Tyres

# LOADPRO HARDSURFACE for Telehandlers



**Steel belted /  
radial construction**

Easy and  
precise loading

**Non-directional**

For better traction  
and strong grip



**Center of tie bar**

Outstanding comfort



**Sharp shoulder**

More contact area



**Extra reinforced  
sidewall**

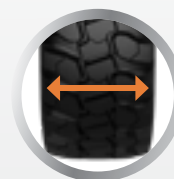
Additional strength  
prevents stub  
penetration

**Strong bead**

Better carcass  
strength and  
load carrying  
capacity

**Higher base width**

Better roadability  
and high traction



# LOADPRO HARDSURFACE

## SIZES

---

405/70 R 18 147A8/147B TL SB

---

405/70 R 20 149A8/B TL SB

---

460/70 R 24 159 A8/B TL SB

---

500/70 R 24 164A8/B TL SB

---

\*SB = Steel belted





# FARMAX R1 for Tractors



### Triple angle lug

Enhanced traction  
& roadability



### High centre lug overlap & tie bar

Improved stability



### Reinforced carcass

Longer  
service life

# FARMAX R1

## SIZES

---

7.00-12 10PR TL

---

6.50-16 6PR TT

---

7.50-16 6PR TT

---

8.25-16 6PR TT

---

12.4-16 6PR TL

---

9.5-16 12PR TL

---

8-16 8PR TL

---

9.5-16 8PR TL

---

9.5-20 8PR TT

---

9.5-22 8PR TT

---

8.3-24 8PR TT

---

9.5-24 8PR TT

---

11.2-24 8PR TT

---

11.2-24 8PR TL

---

11.2-24 10PR TT

---

12.4-24 8PR TT

---

13.6-24 8PR TT

---

14.9-24 8PR TT

---

14.9-24 8PR TL

---

16.9-24 8PR TT

---

13.6-28 12PR TT

---

8.3-24 8PR TL

---

9.5-24 8PR TL

---

12.4-24 8PR TL

---

12.4-24 12PR TT

---

13.6-24 8PR TL

---

14.9-24 12PR TT

---

16.9-24 8PR TL

---

18.4-26 12PR TL

---

11.2-28 8PR TL

---

12.4-24 10PR TT

---

14.9-24 10PR TT

---

18.4-26 12PR TT

---

23.1-26 16PR TL

---

14.9-26 8PR TL

---

14.9-26 12PR TL

---

16.9-26 8PR TT

---

11.2-28 8PR TT

---

12.4-28 8PR TT

---

13.6-28 8PR TT

---

13.6-28 12PR TL

---

14.9-28 8PR TT

---

14.9-28 12PR TL

---

16.9-28 8PR TT

---

16.9-28 12PR TT

---

16.9-28 12PR TL

---

14.9-28 12PR TT

---

12.4-28 8PR TL

---

12.4-28 4PR TL

---

14.9-28 8PR TL

---

16.9-30 8PR TT

---

16.9-30 10PR TT

---

16.9-30 12PR TL

---

18.4-30 8PR TT

---

18.4-30 8PR TL

---

18.4-30 12PR TT

---

18.4-30 14PR TT

---

14.9-30 8PR TT

---

16.9-30 12PR TT

---

23.1-30 12PR TL

---

16.9-30 6PR TL

---

14.9-30 8PR TL

---

18.4-30 14PR TL

---

12.4-32 8PR TT

---

16.9-34 8PR TT

---

18.4-34 8PR TT

---

18.4-34 12PR TT

---

18.4-34 14PR TT

---

16.9-34 8PR TL

---

16.9-34 10PR TT



---

16.9-34 14PR TT

---

18.4-34 10PR TT

---

18.4-34 14PR TL

---

12.4-36 8PR TT

---

12.4-36 12PR TT

---

13.6-36 8PR TT

---

12.4-36 8PR TL

---

13.6-36 8PR TL

---

15.5-38 8PR TT

---

15.5-38 10PR TT

---

15.5-38 12PR TT

---

16.9-38 8PR TT

---

16.9-38 10PR TT

---

16.9-38 12PR TT

---

16.9-38 12PR TL

---

18.4-38 8PR TT

---

18.4-38 12PR TT

---

13.6-38 8PR TT

---

13.6-38 8PR TL

---

15.5-38 8PR TL

---

18.4-38 8PR TL

---

20.8-38 10PR TT

---

20.8-38 14PR TL

---

12.4-38 8PR TT

---

12.4-38 14PR TT



# FARMAX R2 (BIAS)

for Tractors used in Rice & Sugarcane Farming



**Extra-deep tread, with curved tread bars**



Better self cleaning & traction in wet soil

**Flatter tread**



Reduces soil compaction

**Dual step tie bar**



Prevents mud clogging while adding traction & side hill slip resistance



**Stepped lug design**



Good grip in wet & moist soil

**Bolstered nose at tread center**



Improved wear & performance

**Buttressed bar base**



Better self cleaning



# FARMAX R2 (BIAS)

## SIZES

---

14.9-24 6PR TT

---

18.4-26 10PR TT

---

23.1-26 10PR TT

---

14.9-28 8PR TT

---

14.9-28 10PR TT

---

23.1-30 10PR TT

---

20.8-38 10PR TT

---



# FARMAX AS

## for Implements & Agri Utility Tractors



**Robust  
lug design**



High traction  
and long life

**Reinforced  
carcass**

better loadability  
& longer life



**Superior tread  
compound**

Resistance to  
chips and tears

# FARMAX AS

## SIZES

---

6.5/80-12 6PR R1 TT

---

10.0/75-15.3 10PR TL

---

10.0/75-15.3 14PR TL

---

11.5/80-15.3 12PR TL

---





# FARMAX F2 for Implements & Tractors



**3 Rib front  
wheel design**

Easy steering



**Solid  
centre rib**



**Strong  
nylon casing**

Designed for  
two wheel  
drive tractors



# FARMAX F2

## SIZES

---

5.00-15 4PR TT

---

5.50-16 6PR TT

---

6.00-16 6PR TT

---

6.50-16 6PR TT

---

7.50-16 8PR TT

---

10.00-16 8PR TT

---

11.00-16 8PR TT

---

10.00-16 10PR TL

---

7.50-18 8PR TT

---

4.00-19 4PR TT

---

7.50-20 8PR TT

---



# FARMAX X3 TF for Implements & Tractors



Unique tread design with grooves on the central rib and notches in the shoulder

Superior Traction



Superior tread compound

Resistance to chips and tears & excellent steering ability

Angular & open shoulder blocks

Better self-cleaning & longer life



4-Rib pattern

Driving comfort on and off road





# FARMAX X3 TF

## SIZES

---

6.50-16 8PR TT

---

6.00-16 6PR TT

---

5.50-16 6PR TT

---

7.50-16 8PR TT

---

7.50-20 8PR TT

---

6.50-20 8PR TT

---



# FARMAX F2M for Implements



Multi rib design

Easy steering



Cut-resistant  
compound

Improved  
tyre life



# FARMAX F2M

## SIZES

---

10.00-16 8PR TT

---

11.00-16 8PR TT

---

10.00-16 8PR TL

---

11.00-16 8PR TL

---

11.00-16 12PR TL

---





# FARMAX R1 HD for Harvesters



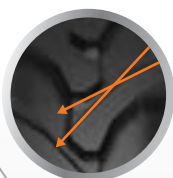
## Robust deep lugs

Superior haulage  
on all terrains



## Dual-angle lug design

Optimal traction for  
peak performance



## Tough nylon casing

Reliable stability,  
puncture resistance



## Advanced tyre compound

Extended  
tyre lifespan  
Enhanced weather &  
crack resistance

## Open buttress design

Improved  
self-cleaning



# FARMAX R1 HD

## SIZES

---

23.1-26 12PR TL

---

18.4-26 10PR TT

---

18.4-38 12PR TT

---





# YIELDMAX 23° for Harvesters



## Stepped sidewall design

Improved performance on slopes



## Tie bar at the center

Strengthened lug base for better stability



## 23° Tread Bars

Best in class traction



## Special tread compound

For longer life

## Buttressed bar base

Better self-cleaning



## Stronger carcass

To carry heavier loads





# YIELDMAX 23°

## SIZES

---

28L-26 12PR TL

---

24.5-32 12PR TL

---

30.5L-32 14PR TL

---

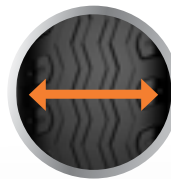


# FARM IMPLEMENT AWI 305 for Implements



**Shoulder lugs are open and angled**

Prevents skidding while turning



**Large footprint**

Reduced compaction

**Strong construction**

Longer tyre life

# FARM IMPLEMENT AWI 305

## SIZES

---

7.00-12 6PR TL

---

10.0/80-12 8PR TL

---

10.0/80-12 10PR TL

---

10.0/75-15.3 10PR TL

---

10.0/75-15.3 14PR TL

---

11.5/80-15.3 10PR TL

---

11.5/80-15.3 14PR TL

---

11.5/80-15.3 16PR TL

---

12.5/80-15.3 12PR TL

---

10.0/75-15.3 12PR TL

---

11.5/80-15.3 12PR TL

---

11.5/80-15.3 12PR TT

---

11.5/80-15.3 16PR TT

---

10.0/75-15.3 10PR TT

---

10.0/75-15.3 12PR TT

---

10.0/75-15.3 14PR TT

---

10.0/75-15.3 18PR TL

---

400/60-15.5 14PR TL

---

400/60-15.5 16PR TL

---

13.0/55-16 12PR TL

---

13.0/55-16 14PR TL

---

13.0/55-16 18PR TL

---

13.0/65-18 16PR TL

---

12.5/80-18 12PR TL

---

12.5/80-18 14PR TL

---

12.5/80-18 16PR TL

---

12.5/80-18 18PR TL

---



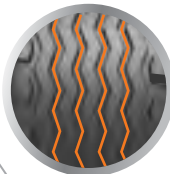


# FARM IMPLEMENT 404 for Trailers & Implements



## Multi rib low section design

High flotation with minimum soil compaction



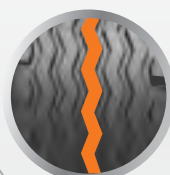
## Extra wide tread & high volume

High load carrying capacity



## Non directional tread pattern

Prevents skidding while turning



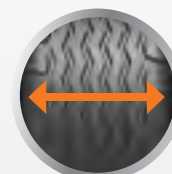
## Lugs are open & angled at the shoulder

Ensures maximum stability



## Large contact area

Designed for both on & off-road application



# FARM IMPLEMENT 404

## SIZES

---

14.0/65-16 14PR TL

---

14.0/65-16 10PR TL

---

15.0/55-17 14PR TL

---

500/50-17 10PR TL

---

500/50-17 14PR TL

---

15.0/55-17 10 PR TL

---

15.0/55-17 18 PR TL

---

15.0/70-18 16PR TL

---



# FARM IMPLEMENT LP for Implements



Advanced tread design

Long life



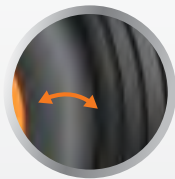
Multi-rib design

Effortless steering control



Rounded shoulder

Reduce soil compaction



Cut-resistant compound

Tyre longevity





# FARM IMPLEMENT LP

## SIZES

---

16.5L-16.1SL 10PR TL

---

16.5L-16.1SL 14PR TL

---



# FLOTATION PLUS for Trailers



**Rounded  
shoulder**  
Reduced damage  
to crops



**Larger volume  
& footprint**  
Reduced  
compaction

# FLOTATION PLUS

## SIZES

---

480/45-17 (19.0/45-17) 18PR TL

---

480/45-17 (19.0/45-17) 16PR TL

---

500/50-17 14PR TL

---

480/45-17 (19.0/45-17) 10PR TL

---

480/45-17 (19.0/45-17) 14PR TL

---





# FLOTATION T422 for Trailers

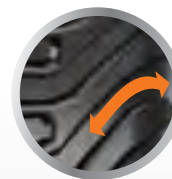


Tough  
nylon casing,  
Strong bead  
bundle

High load  
carrying capability

Larger volume  
& footprint

Reduced  
compaction



Rounded  
shoulder

Reduced damage  
to crops

# FLOTATION T422

## SIZES

---

500/50-17 16PR TL

---

500/50-17 18PR TL

---

500/60-22.5 16PR TL

---

550/45-22.5 16PR TL

---

550/45-22.5 20PR TL

---

550/60-22.5 16PR TL

---

600/50-22.5 16PR TL

---

700/40-22.5 16PR TL

---

700/50-22.5 16PR TL

---

600/55-22.5 16PR TL

---

550/60-22.5 20PR TL

---

600/55-26.5 16PR TL

---

700/50-26.5 16PR TL

---

800/45-26.5 12PR TL

---

800/45-26.5 16PR TL

---



# T422 VALUE PRO for Trailers



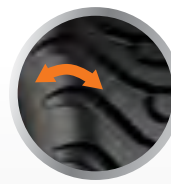
Larger volume  
& footprint

Reduced  
compaction



Rounded shoulder

Reduced damage  
to crops



\*Designed for free-rolling applications



# T422 VALUE PRO

## SIZES

---

400/60-15.5 16PR TL

---

400/60-15.5 20PR TL

---

400/55-22.5 12PR TL

---

400/55-22.5 16PR TL

---

400/55-22.5 18PR TL

---

500/45-22.5 12PR TL

---

500/45-22.5 16PR TL

---

500/60-22.5 16PR TL

---

550/45-22.5 16PR TL

---

550/60-22.5 16PR TL

---



# FLOTATION TX440 for Trailers & Excavators



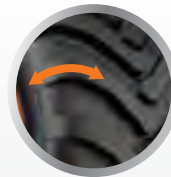
Larger volume & footprint

Reduced compaction



Rounded shoulder

Reduced damage to crops



# FLOTATION TX440

## SIZES

---

500/60-22.5 16PR TL

---

550/60-22.5 16PR TL

---

600/50-22.5 16PR TL

---

700/40-22.5 16PR TL

---

700/40-22.5 18PR TL

---

600/50-22.5 18PR TL

---





# TR 800 for Implements



**Rounded shoulder**

Reduced damage  
to crops



**Larger volume  
& footprint**

Reduced  
compaction



# TR 800

## SIZES

---

400/60-15.5 14PR TL

---

400/60-15.5 18PR TL

---



# IRROGATOR for Irrigation Machines



**Strong  
nylon casing**

Excellent  
stability &  
increased  
service life



**Optimised  
lug angle  
with lug overlap**

Uniform wear



# IRROGATOR

## SIZES

---

11.2-24 4PR TT

---

14.9-24 8PR TT

---

14.9-24 6PR TL

---

11.2-38 6PR TT

---

11.2-38 6PR TL

---



# TURF-XL for Turf & Utility Tractor



**More rubber on the contact surface**

Better performance in all soil and turf conditions



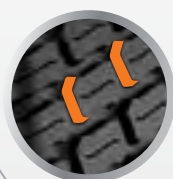
**Specific tread pattern**

Improving stability & traction also equally load distribution



**High tread depth**

Better performance in all soil and turf conditions



**Unique rounded shoulder block design**

No turf damage and ease while turning



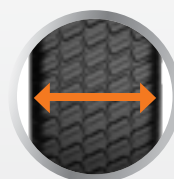
**Unique alignment of blocks**

Excellent steering stability and improved lateral traction and enables self-cleaning



**Enlarged contact area**

Improving stability and traction



# TURF-XL

## SIZES

---

23x10.50-12 8PR TL

---

26x12.00-12 8PR TL

---

26x12.00-12 10PR TL

---

26x12.00-12 12PR TL

---

24X8.5-14 4PR TL

---

25X8.5-14 6PR TL

---

13.6-16 4PR TL

---

38X14-20 4PR TL

---





# LOGGER XL for Forestry Log Skidder



**Strong and straight lugs**

High traction across all surfaces



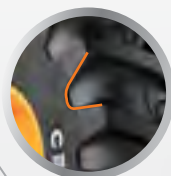
**Reinforced sidewall & shoulder deflector**

Protection against impacts & cuts



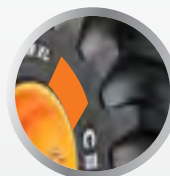
**Deep and open shoulder**

Better self cleaning



**Multi-layer Nylon carcass with wide steel breakers**

Excellent puncture resistance



**Rim protector**

Protects bead against stub damage

# LOGGER XL

## SIZES

---

21.3-26 160A6 TL LS2 SB\*

---

\*SB = Steel belted





# FOREST XL for Forestry Forwarder & Harvester



## Wide & robust Lug Design

Excellent traction  
& support for  
Track use



## Larger Tread Width

Ensures wider  
footprint resulting in  
low ground pressure



## Steel belted construction

Superior puncture  
resistance & load  
carrying capacity



## Specially designed Tread and sidewall compound

Provides protection to  
the tyre from cuts &  
tears and durability  
in rough terrain

## Uniquely designed bead area

Prevents rim slippage



# FOREST XL

## SIZES

---

710/45-26.5 168A8 TL LS2 SB\*

---

\*SB = Steel belted



# LOAD INDEX & SPEED SYMBOL

According to ETRTO (The European Tyre & Rim Technical Organization), as well as to ECE (Economic Commission for Europe-UN Institution Geneva), the maximum load capacity, as well as the maximum speed are indicated by load index & speed symbol.

The following table shows the meaning of each speed symbol & the load in kg/lbs corresponding to each load index:

Load Index	Load Kg / lbs	Load Index	Load Kg / lbs	Load Index	Load Kg / lbs	Load Index	Load Kg / lbs	Speed Symbol	Kmph / mph
102	850 / 1874	129	1850 / 4078	156	4000 / 8818	183	8750 / 19290	A1	5 / 3
103	875 / 1929	130	1900 / 4189	157	4125 / 9094	184	9000 / 19841	A2	10 / 6
104	900 / 1984	131	1950 / 4299	158	4250 / 9369	185	9250 / 20392	A3	15 / 9
105	925 / 2039	132	2000 / 4409	159	4375 / 9645	186	9500 / 20944	A4	20 / 12
106	950 / 2094	133	2060 / 4541	160	4500 / 9921	187	9750 / 21495	A5	25 / 16
107	975 / 2149	134	2120 / 4674	161	4625 / 10196	188	10000 / 22046	A6	30 / 19
108	1000 / 2205	135	2180 / 4806	162	4750 / 10472	189	10300 / 22707	A7	35 / 22
109	1030 / 2271	136	2240 / 4938	163	4875 / 10747	190	10600 / 23369	A8	40 / 25
110	1060 / 2337	137	2300 / 5071	164	5000 / 11023	191	10900 / 24030	B	50 / 31
111	1090 / 2403	138	2360 / 5203	165	5150 / 11354	192	11200 / 24691	C	60 / 37
112	1120 / 2469	139	2430 / 5357	166	5300 / 11684	193	11500 / 25353	D	65 / 40
113	1150 / 2535	140	2500 / 5511	167	5450 / 12015	194	11800 / 26014	E	70 / 44
114	1180 / 2601	141	2575 / 5677	168	5600 / 12346	195	12150 / 26786	F	80 / 48
115	1215 / 2679	142	2650 / 5842	169	5800 / 12787	196	12500 / 27557	G	90 / 56
116	1250 / 2756	143	2725 / 6007	170	6000 / 13228	197	12850 / 28329	J	100 / 62
117	1285 / 2833	144	2800 / 6173	171	6150 / 13558	198	13200 / 29101	K	110 / 68
118	1320 / 2910	145	2900 / 6393	172	6300 / 13889	199	13600 / 29982	L	120 / 75
119	1360 / 2998	146	3000 / 6614	173	6500 / 14330	200	14000 / 30864	M	130 / 81
120	1400 / 3086	147	3075 / 6779	174	6700 / 14771	201	14500 / 31966	N	140 / 87
121	1450 / 3197	148	3150 / 6944	175	6900 / 15212	202	15000 / 33069	P	150 / 93
122	1500 / 3307	149	3250 / 7165	176	7100 / 15653	203	15500 / 34171	Q	160 / 99
123	1550 / 3417	150	3350 / 7385	177	7300 / 16093	204	16000 / 35273	R	170 / 106
124	1600 / 3527	151	3450 / 7606	178	7500 / 16534	205	16500 / 36376	S	180 / 112
125	1650 / 3638	152	3550 / 7826	179	7750 / 17086	206	17000 / 37478		
126	1700 / 3748	153	3650 / 8047	180	8000 / 17637	207	17500 / 38580		
127	1750 / 3858	154	3750 / 8267	181	8250 / 18188	208	18000 / 39683		
128	1800 / 3968	155	3875 / 8543	182	8500 / 18739	209	18500 / 40785		

# WARRANTY POLICY



## RADIAL TYRES:

Limited Manufacturing Warranty Applicable for 7 Years



YEARS FROM PRODUCTION OR SALE						
	1 <sup>st</sup> & 2 <sup>nd</sup> YEAR	3 <sup>rd</sup> YEAR	4 <sup>th</sup> YEAR	5 <sup>th</sup> YEAR	6 <sup>th</sup> YEAR	7 <sup>th</sup> YEAR
<b>IF WEAR% LESS THAN</b>	25%	40%	50%	70%	80%	90%
<b>MAXIMUM CREDIT*</b>	100%	60%	50%	30%	20%	10%



## BIAS TYRES:

Limited Manufacturing Warranty Applicable for 5 Years



YEARS FROM PRODUCTION OR SALE				
	1 <sup>st</sup> & 2 <sup>nd</sup> YEAR	3 <sup>rd</sup> YEAR	4 <sup>th</sup> YEAR	5 <sup>th</sup> YEAR
<b>IF WEAR% LESS THAN</b>	25%	40%	50%	70%
<b>MAXIMUM CREDIT*</b>	100%	60%	50%	30%





[www.forrez.com](http://www.forrez.com)



[www.ceatspecialty.com/uk](http://www.ceatspecialty.com/uk)